



SUMMARY SHEETS

Condition of structures

Background. Port Grimaud was built in the 1960s and 1970s, and after almost 50 years in operation, an inspection of the structures is now due. The port is currently experiencing a number of technical problems linked to natural ageing, exacerbated by a lack of maintenance and a lack of infrastructure development.

Methodology. A survey of the harbour structures (quays, pontoons, landing stages, etc.) was carried out in order to plan emergency work. The site was visited on foot and by boat to inspect the various structures. Additional underwater diagnostics were also carried out.



Assessment. The inspections enabled us to identify the defects observed and also to categorise the level of urgency associated with each defect.



(a)



(b)

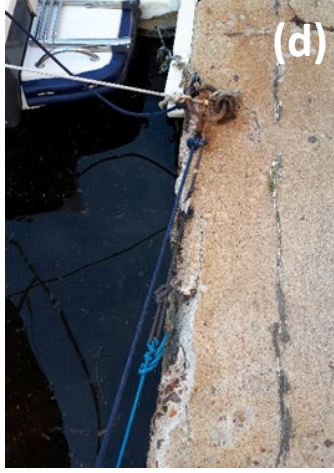


(c)

- (a) Ile du Couchant pontoon: traces of corrosion on the piles and mooring rings.
- (b) Shipyard landing stage: spalling, exposed metal reinforcement and cracks.
- (c) Church landing stage: temporary repairs in 2022 (floats, anchors); overall repairs required (emergency work).



(c)



(d)



(e)



(f)

(c) Fuelling station quay: spalling, corrosion, cracks.

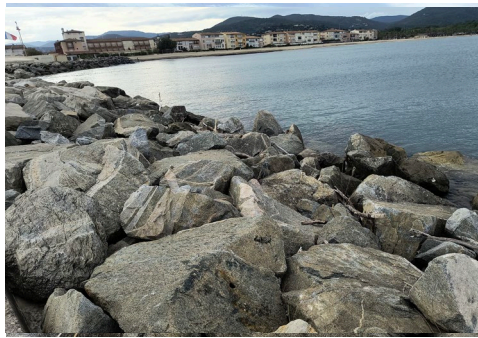
(d) Quai des Fossés Est: cracking, spalling, visible metal reinforcement, limited accessibility.

(e) Quick stop landing stage: limited accessibility, damaged decking.

(f) Church square footbridge: dangerous access.

(g) Outer harbour breakwater: loose riprap structure.

(h and i) Pontoon 15 - PG1: corroded piles.



Glossary.

Defect: *a problem in the structural component of a building*

Spalling: *shard of stone removed from a block by accident*

Project objective

- Repair or replace structures showing signs of defects that could affect user safety.
- Improve user comfort with facilities that are suited to climate change and evolving nautical uses.

